



Introducing Series ZK75



LED Touch Screen



Fingerprint



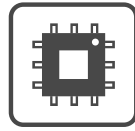
DC Powered COM



Front Panel Protection



LED-backlit



Aluminum Housing

ZK75 Series is an intelligent all-in-one POS terminals with optical fingerprint scanner. The Merchants could manage their club members through POS terminals.

Our all-in-one POS terminal was built-in the Intel Bay Trail Quad-Core processor and brightness display screen. The highlight LED Backlight Screen can support Five-wire analog resistive type&Projected capacitive touch for your special applications.

* IP64 Water & Dust-proof Front Panel Protection

Cashier's display panel is mad of pure plane and touch dead angle-free;seamless screen can waterproof and dustproof.



* Robust Aluminum Enclosure & Ultra-slim Appearance Design

- Machine enclosure is made of aluminum design can be used at hostile environments.
- Small Footprint and compact design.
- Easy access M/B, 2.5" HDD & RAM for installation and maintenance.

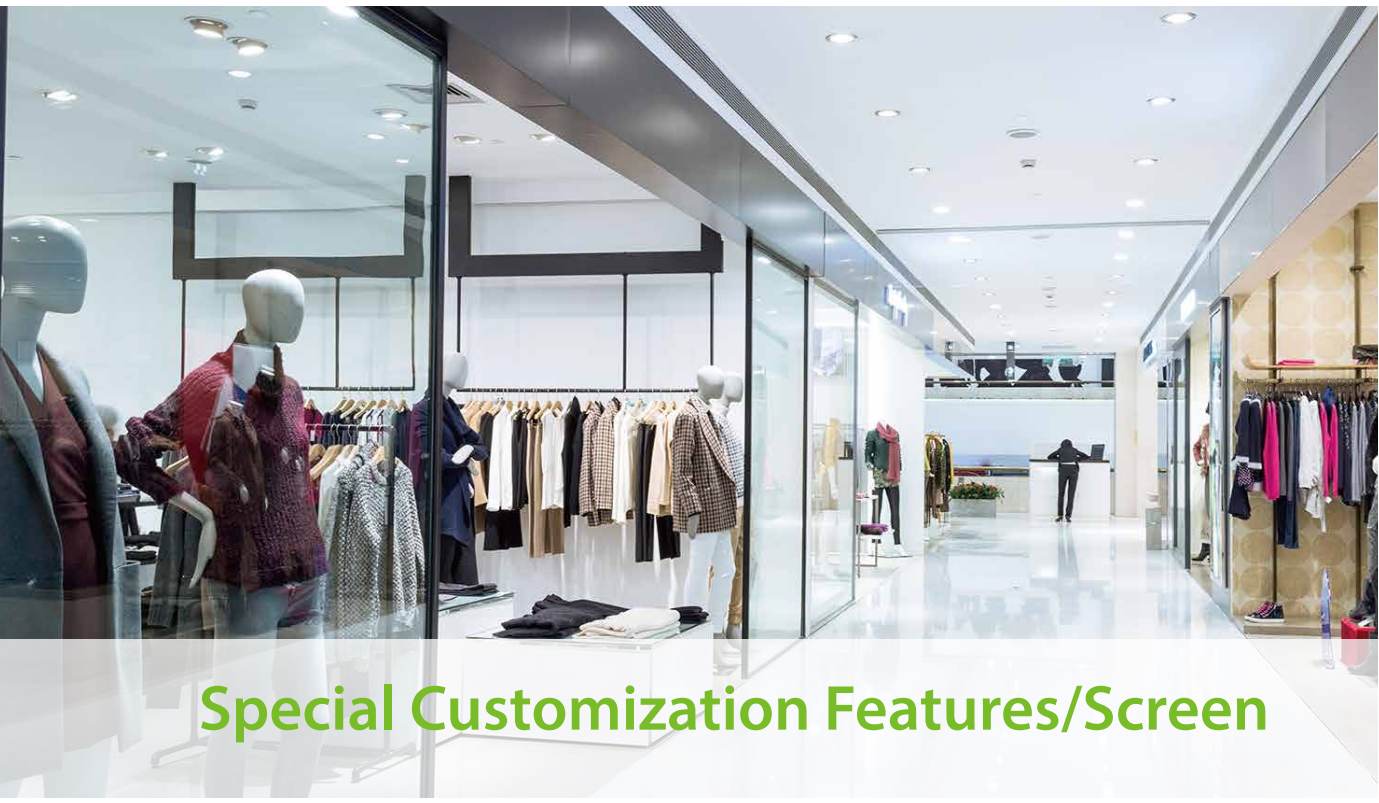


* ZK7550 15" POS Terminal

Display Resolution: 1024 x 768
Brightness: 350cd/m²

* ZK7550W 15.6" POS Terminal

Display Resolution: 1366x768
Brightness: 220cd/ m²



Special Customization Features/Screen



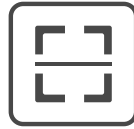
Magnetic Stripe Card Reader



Wi-Fi & NFC



RFID



1D/2D Barcode



i-Button



Cash Drawer

ZK75 Series is an intelligent POS System with multiple instrument optional(Magnetic card reader, 1D/2D barcode scanner or 2-in-1,3-in-1 module, i-Button&MSR/MIFARE RFID).We provide the optional configuration referring to the features of your industry. ZKTeco provide the customized POS terminal depending on the exact requirement from clients.



* Optional 8"/10" Customer Display Screen

- Optional 8"/10"/8"+8" Customer Display Screen can be used on ZK7550.
- Optional 8"/10" Customer Display Screen can be used on ZK7550W.
- The auxiliary screen is LED type, which can implement automatic switching between customer display and advertisement. The cashier can use customer display to play daily advertisement by software

* Optional VFD Customer Displays

The single-screen cash register is optional configured with VFD customer display, with character display; thus the whole cashiering process is clear at a glance.



* Front External Peripheral Interfaces

Front external peripheral interfaces can be connected to multiple peripherals of cash register to satisfy your business demand. With removable hard drive design, hard drive can be replaced without disassembly.

MAKE YOUR LIFE SPARKLE
WITH BIOMETRIC
INNOVATIONS



The optical fingerprint scanner connected with the POS Cash Register has the following advantages:

The Merchants could manage their club members through POS terminals, including fingerprint collection, fingerprint registration, fingerprint matching, fingerprint retrieval and Anti-spoof/fake detection capability.

Application Scenarios



Retail industry
(Shopping center, convenience store, book Store,Retail Shop, etc.)



Catering industry
(Hotel, restaurant, fast food restaurant, tea/coffee house, etc.)



Exclusive Store
(Clothing, medical, maternal and child supplies, furniture, digital products etc.)

Parameter Indexes and I/O Interface

| | | |
|--|---------------|---|
| <div>Environment</div> <div>Operation Temp.: 32~95°F (0~35°C)</div> <div>Storage Temp.: -4~ 140°F (-20~ 60°C)</div> <div>Relative Humidity: 20% ~ 80% non-condensing</div> | Intel | <div>USB2.0</div> <div>DC IN COM1 COM2 COM3 VGA LAN USB3.0 CASH USB2.0*2 LINE OUT</div> |
| | Celeron J1900 | |
| | Side | <div>USB2.0*2</div> |

ZK75 Series Specifications

| | |
|-----------------|---|
| System | POS Ready Windows 7/ Windows Embedded 8.1 Industry Pro / Win10 IoT Enterprise |
| Processor | Intel® Celeron J1900 QC 2.0GHz |
| Memory | One SO-DIMM socket supports DDR3L 1333 up to 8GB |
| Storage | 2.5" SATAIII HDD x 1 |
| Network | LAN x 1 (RJ45 10/100/1000 Base-T) |
| Chassis Housing | Aluminum |

Specifications of Display/Touch Screen

| | | |
|------------------|--|---------------|
| Model NO. | ZK7550 | ZK7550W |
| LCD Display Size | 15" LCD | 15.6" LCD |
| Max. Resolution | 1024x768 | 1366x768 |
| Brightness | 350cd/㎡ | 220cd/㎡ |
| Backlight | LED | |
| Touch Panel Type | Five-wire analog resistive type&Projected capacitive touch | |
| Dimension(WxDxH) | 366 x 265 x 377 mm | 398x251x365mm |
| Power Supply | 90W 19V power adapter | |

I/O Port

| | | |
|------------------|--|---------|
| Model NO. | ZK7550 | ZK7550W |
| USB | x6(USB2.0x5,USB3.0x1) | |
| Powered COM | x3 (5V/12V BIOS selection) | |
| Cash Drawer Port | x 1 (12V/24V RJ11 cash drawer port BIOS selection) | |
| Audio Port | Line-out x 1 | |
| VGA | x 1 | |
| 19V DC IN | x 1 | |

ZKTeco



ZK75 Series

All in One Biometric Smart POS Terminal

